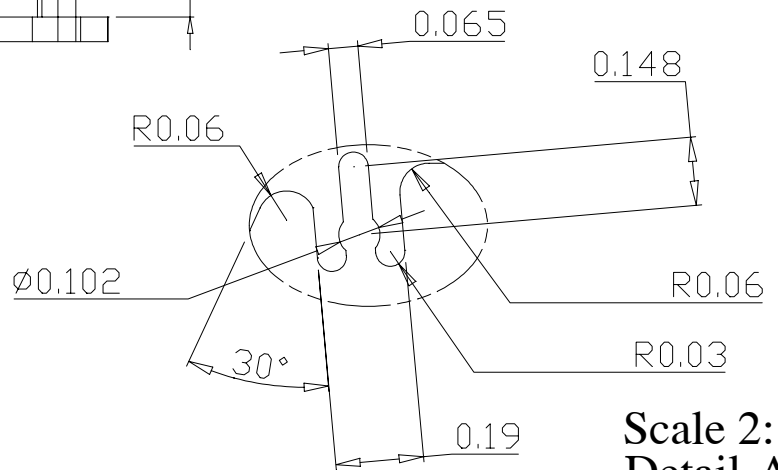
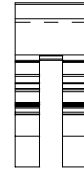
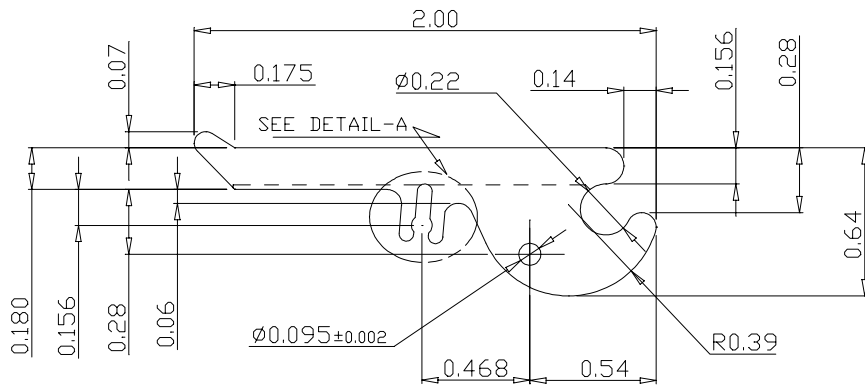
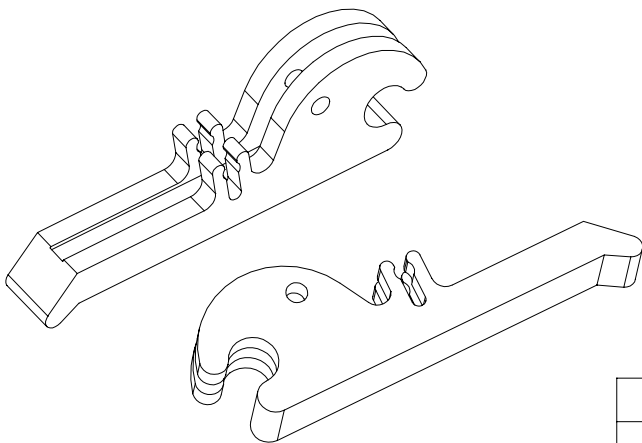


NOTE: ALL DIMNS. ARE IN INCHES



Scale 2:1  
Detail-A



MATERIAL REFERENCE CHART

MATERIAL CODE	MATERIAL DESCRIPTION
*	Nylon 6/6, UL E39806 M, Meets UL94-V2 & Mil. Spec. M20693, Stock Color: Natural.
H	Nylon 6/6, Flame Retardant, UL E44600 M, Meets UL94-V0, Stock Color: Natural.

1	R1036-A	0.062	Ø3/32 x 5/16	* , H Refer to Mat.Ref.Chart against above supplied Material Code
S.NO	PART NO	CARD THICK.	MOUNTING PIN	MATERIAL CODE
PART NAME: INSERTER-EXTRACTOR			DRN. BY	DATE
PART NO : R 1036-A			CHK. BY	SIGN
SHEET 1 OF 1			DO NOT SCALE THE DRAWING	TOLERANCE
				.X = ± 0.020
				.XX = ± 0.010
				.XXX = ± 0.005

**MICRO DIMENSIONAL INC.**  
548 NORTH TROOPER ROAD. NORRISTOWN, PA 19403