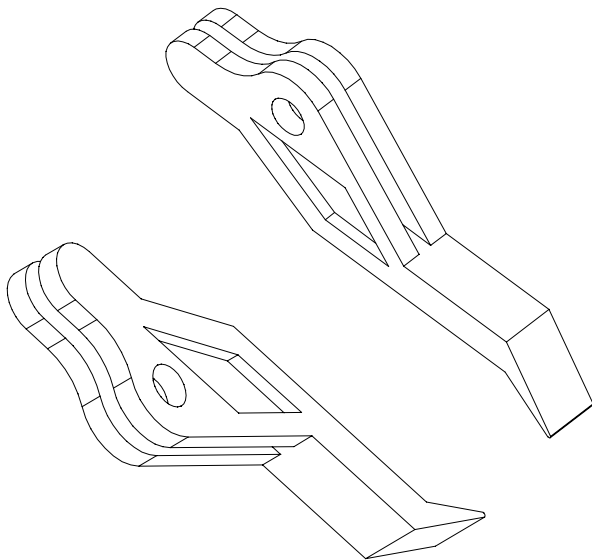
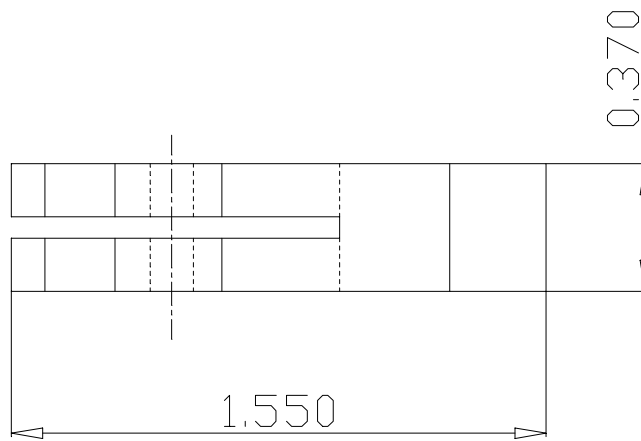
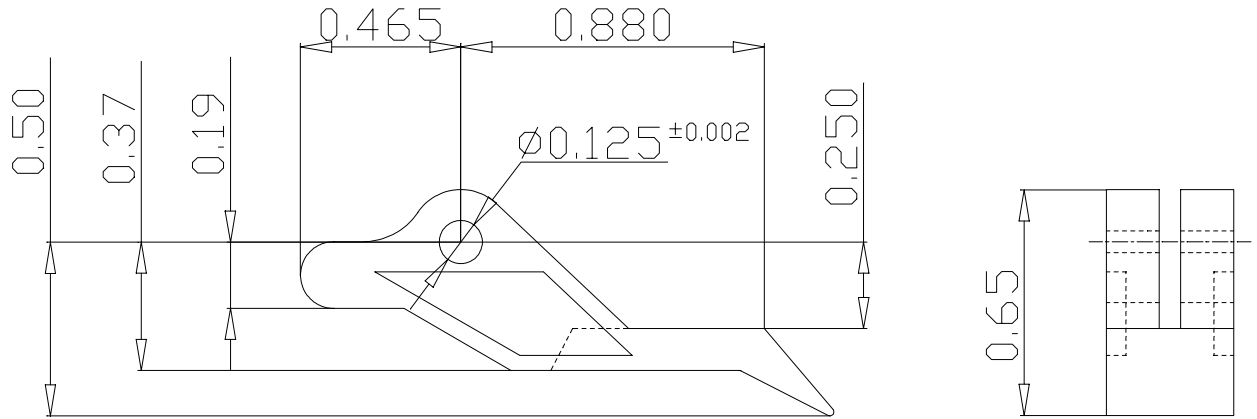


NOTE: ALL DIMNS. ARE IN INCHES



MATERIAL REFERENCE CHART

MATERIAL CODE	MATERIAL DESCRIPTION		
*	Nylon 6/6, UL E39806 M, Meets UL94-V2 & Mil. Spec. M20693, Stock Color: Natural.		
G	Nylon 6/6, 33% Glass Filled, UL E43392 N, Meets UL94-V2 & Mil. Spec. M20693, Stock Color: Black.		

S.NO	PART NO	CARD THICK.	MOUNTING PIN	MATERIAL CODE
1	R1013-A	0.062	Ø1/8 x 3/8	*G

PART NAME: INSERTER-EXTRACTOR		DRN. BY	DATE	SIGN
PART NO : R1013-A		CHK. BY		SHAQK
				DAVID

SHEET 1 OF 1	DO NOT SCALE THE DRAWING		TOLERANCE	.X = ± 0.020 .XX = ± 0.010 .XXX = ± 0.005
--------------	--------------------------	--	-----------	---

MICRO DIMENSIONAL INC.
548 NORTH TROOPER ROAD. NORRISTOWN, PA 19403