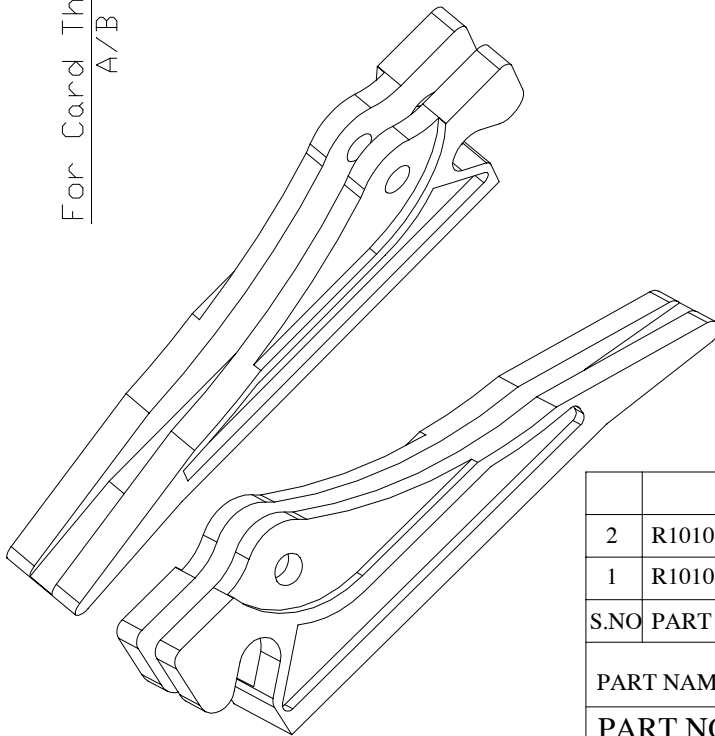
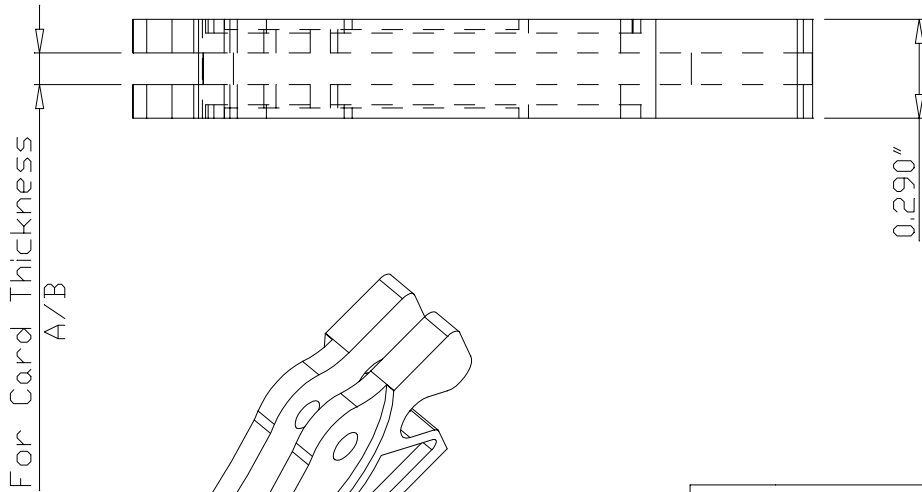
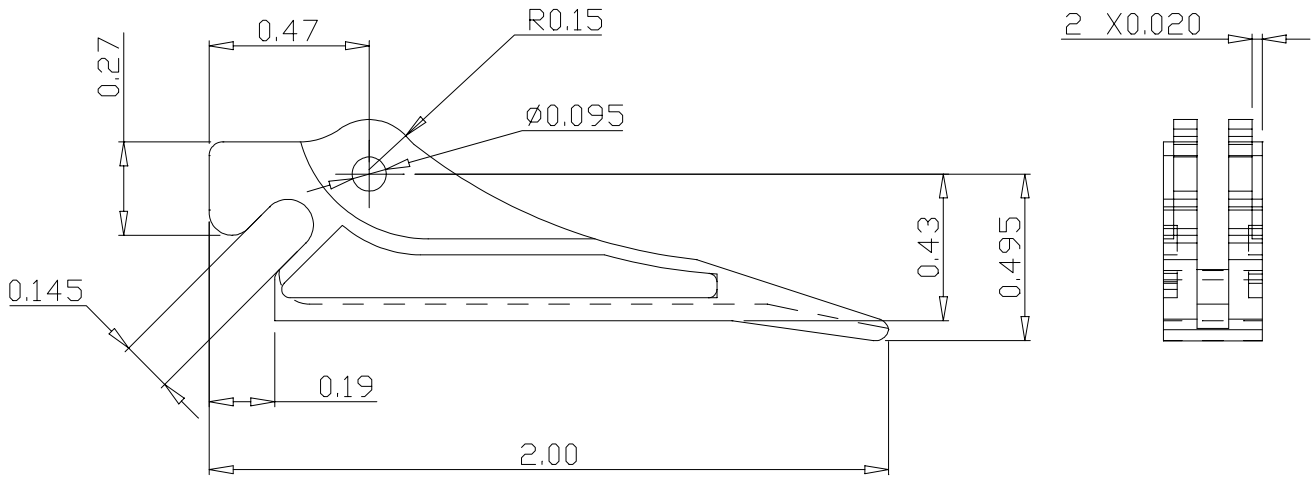


NOTE: ALL DIMNS. ARE IN INCHES



MATERIAL REFERENCE CHART

MATERIAL CODE	MATERIAL DESCRIPTION
*	Nylon 6/6, UL E39806 M, Meets UL94-V2 & Mil. Spec. M20693, Stock Color: Natural.
G	Nylon 6/6, 33% Glass Filled, UL E43392 N, Meets UL94-V2 & Mil. Spec. M20693, Stock Color: Black.
H	Nylon 6/6, Flame Retardant, UL E44600 M, Meets UL94-V0, Stock Color: Natural.
I	Nylon 6/6, 20% Glass filled, Meets UL94-V2, Stock Color : Natural.

2	R1010-B	0.093 - 0.125	Ø3/32 x 5/16	*,G,H,I Refer to Mat.Ref.Chart for Mat.description against above supplied Material Code
1	R1010-A	0.062	Ø3/32 x 1/4	
S.NO	PART NO	CARD THICK.	MOUNTING PIN	MATERIAL CODE
PART NAME: INSERTER-EXTRACTOR			DATE	SIGN
PART NO : R 1010-(A/B)			DRN. BY	SHAQK
			CHK. BY	DAVID
SHEET 1 OF 1	DO NOT SCALE THE DRAWING	TOLERANCE		.X = ± 0.020 .XX = ± 0.010 .XXX = ± 0.005

MICRO DIMENSIONAL INC.
548 NORTH TROOPER ROAD. NORRISTOWN, PA 19403